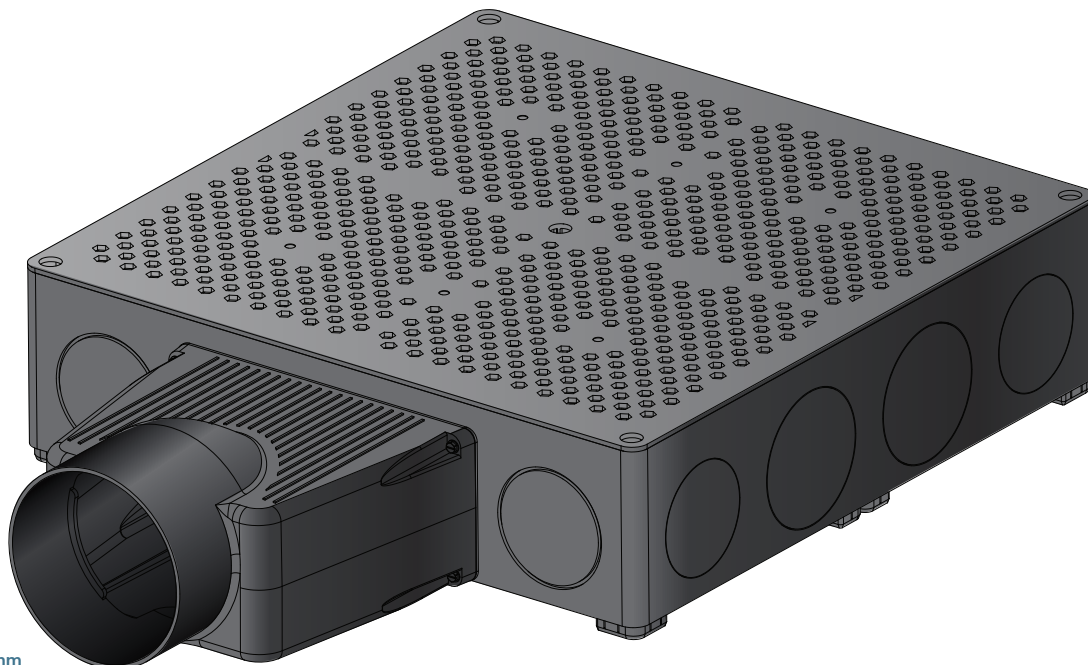


MARINO CELL PIPE ADAPTOR

The new Marino Cell Pipe Adaptor creates the connection of a 150mm pvc pipe, SDR 35 to the Marino Cell system, ensuring efficient flow in stormwater management and green infrastructure applications.

KEY FEATURES:

- Seamless Integration: Designed specifically for use with Marino Cell, allowing for a secure and reliable connection to 150mm pvc pipes, SDR 35
- Material: Polypropylene
- Held in place by threaded nut connection
- Enhanced Site Design Flexibility
- Optimized Water Flow: Supports efficient drainage and stormwater management within green infrastructure applications
- Easy Installation



ID is 159.50 mm
OD is 166.50 mm

MARINO CELL PIPE ADAPTOR

